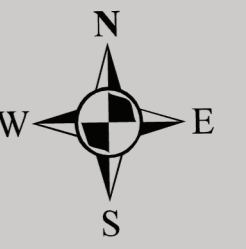


# Forest County ATV Trails

2026-2027



**Trail Information**

**Forest County ATV Association**  
www.forestcountyatv.com

**Forest County Information**  
Website: www.forestcountywi.com  
Forest County Office: 715-478-3475  
Tourism: (715) 478-3450 or 1-800-334-3387

**US Forest Service**  
715-674-4481  
www.fs.usda.gov/main/cnrf

**Legend**

- Paved ATV-UTV Routes
- Non-paved ATV-UTV Routes
- National Forest Trails
- Sokaogon Chippewa ATV/UTV Trails
- Nicolet State Trail
- Wolf River State Trail
- Forest County ATV/UTV Trails
- Valley Trail
- Forest County Community
- Sokaogon Chippewa Community
- Trail Head / Parking
- Business
- Gas Available

Please Patronize These Businesses- ●

ATV/UTV Traffic is open Year Round to all Town Roads and Lettered County Highways in Forest County

**City of Crandon**

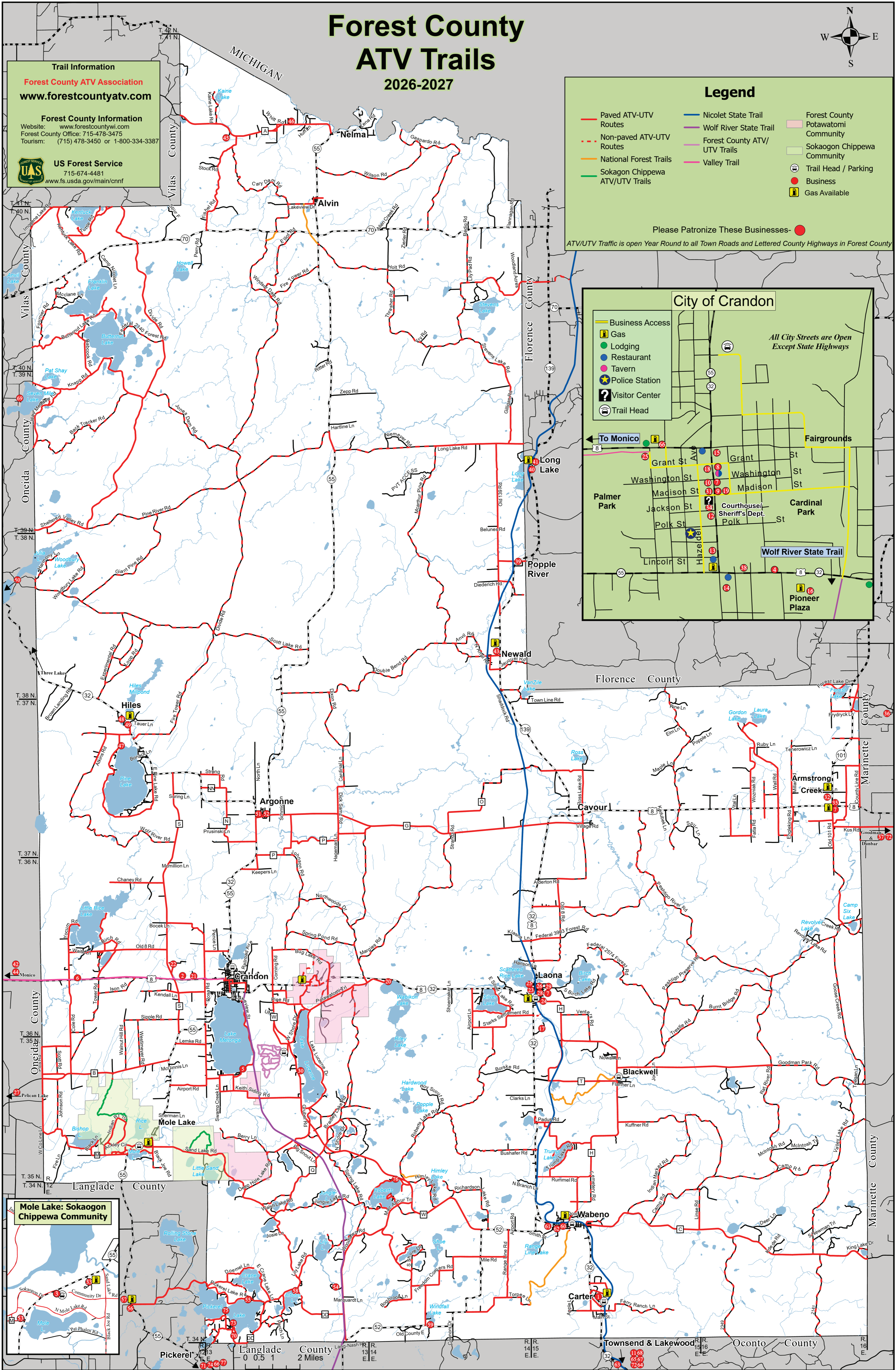
All City Streets are Open Except State Highways

- Business Access
- Gas
- Lodging
- Restaurant
- Tavern
- Police Station
- Visitor Center
- Trail Head

Locations: Palmer Park, Fairgrounds, Grant St, Washington St, Madison St, Courthouse, Sheriff's Dept., Polk St, Cardinal Park, Pioneer Plaza, Wolf River State Trail, Lincoln St, Hazelden.

Directions: To Monico, To Popple River

**Mole Lake: Sokaogon Chippewa Community**



0 0.5 1 2 Miles

11.68  
65.67  
72.64